

# Mix & Match Quilting

by Anita Goodesign™



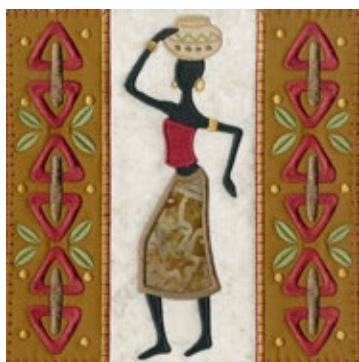
I have had the idea for this collection ever since I visited Disney's Animal Kingdom with a group of friends last year. Every area of the resort was filled with inspiration for our African Safari quilt. This collection contains lions, leopards, zebras, giraffes and more. The have been reproduced in 20 different quilt blocks with vivid backgrounds. The designs all use applique so you can use your favorite fabrics to tell the story of your Safari! We also include border blocks to create your quilt.

## African Safari Quilt

This collection was designed to be compatible with all Anita Goodesign Mix & Match Collections.



20 block designs and 2 transitional in 4 sizes each (7.8", 6.8", 5.8", and 4.8").



Anita Goodesign™

Visit our website at [www.anitagoodesignonline.com](http://www.anitagoodesignonline.com)