



Connecting Flowers

56 Designs

Create a wall hanging without measuring!
Each block has a unique squaring stitch that makes creating projects even easier. The tutorial is on the CD.

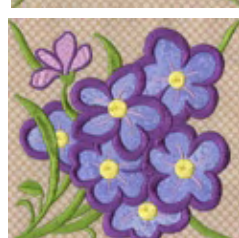
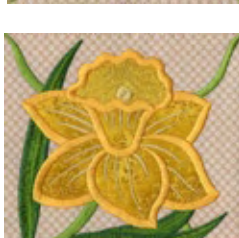
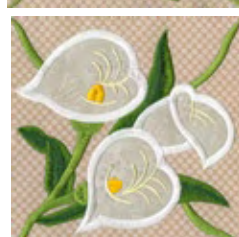
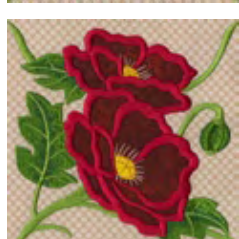
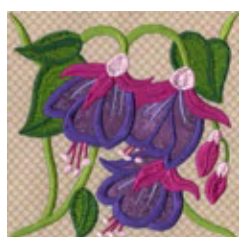
Full Collection

The connecting flowers collection is like 2 design packs in one. The first part of the collection consists of connecting flower quilt blocks. There are 16 different flowers in 2 different sizes each that include a unique squaring stitch making it much easier to create the perfect quilt. There are also 3 different running stitch blocks that you can use for checkerboard style quilts or to create the unique wall hanging that is our sample design. These designs are made to be rotated at a 45° angle for the finished project. We include all of the necessary pieces to make a square quilt with these designs like our placemat project. The second part of the collection consists of all the original flowers edited and rotated so that they are straight. We created the wall hanging using ten of the flowers and the running stitch designs. Since the designs are all rotated 45°, the finished project forms a natural point. There is no need for you too measure the blocks because the pattern is included in our tutorial.



Connecting Flowers

16 different connecting flowers in 2 different sizes - 5"x5" & 6"x6".



4 different connecting quilt designs

16 isolated flowers for the 5"x7" hoop

