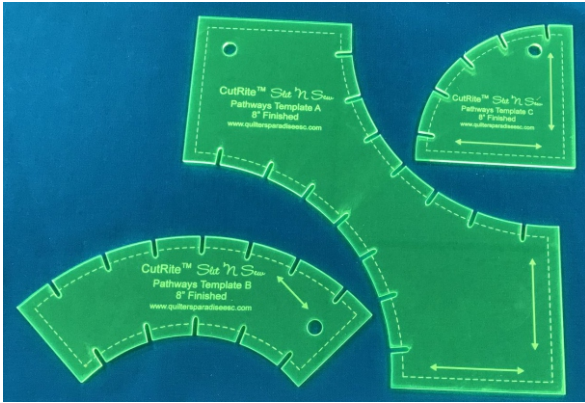


Cutting Directions

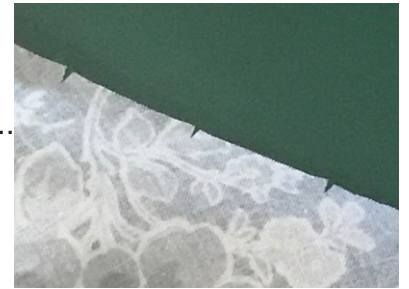


Remove templates from package. Affix the CutRite™ HandiGrabber material to the back of the templates so they will not slide when cutting. We suggest adding 1/4" wide strips along each edge of each template on the inside of the engraved 1/4" seam allowance line.



Fully cut out all pieces.
Cut each slit on all of the pieces.
Cut from the inside of the slit to the outside away from you..

Once fully cut out, gently pull the fabric so you can see the slits.



Helpful Cutting Hints

Use a sharp rotary cutting blade.

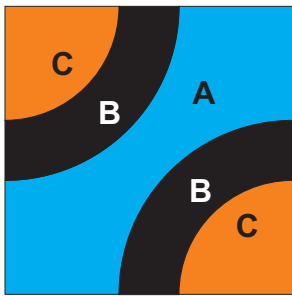
Use either a 28 mm or 45 mm rotary cutter blade. Experience suggests that the 28 mm size tends to work better when cutting tighter curves and cutting slits.

Always cut slits away from yourself by putting the rotary cutter on the inside end of the slit and cutting to the edge of the template.

Cut slits must and need not extend inside the 1/4" seam allowance line. This will not occur with use of 28 mm or 45 mm rotary cutter blades.

You are encouraged to experiment with scrap fabric first to see which blade size and cutting technique work best for you along with how many layers of fabric to cut at a time.

You can use a sharpened pencil or fine tipped marker to mark the slits and use scissors to cut the slits. However, be sure that the marks and cuts do not go inside the 1/4" seam allowance line.



8" Finished

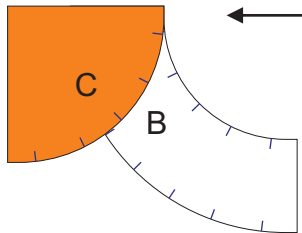
Pieces needed for one block	
Piece	Quantity
A	1
B	2
C	2

# of Pieces can get from a Pre-Cut						
Piece	5" Square	10" Square	Fat Quarter	Quarter Yard	Half Yard	One Yard
A	0	1	6	7	14	28
B	0	3	12	9	27	54
C	1	4	25	20	50	100

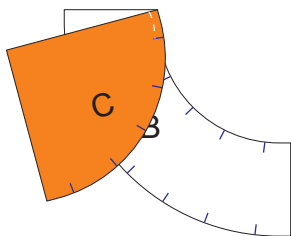
To calculate the yardage needed for the pieces for your project, you may use our free Slit 'N Sew Fabric Calculator at <https://www.quiltersparadiseesc.com/Calculators/SnS Fabric Calculator/Slit N Sew Fabric Calculator.php>.

Sewing Directions

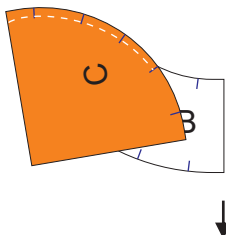
Set stitch length to 1.8.



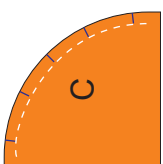
Place Piece B face up.
Place Piece C face down matching the edges.
Stitch 1/4" from the edge and stop after 3 stitches with the needle down.



Raise the pressure foot and pull Piece B and C together matching the next slit.
Lower the pressure foot and sew to the next slit.



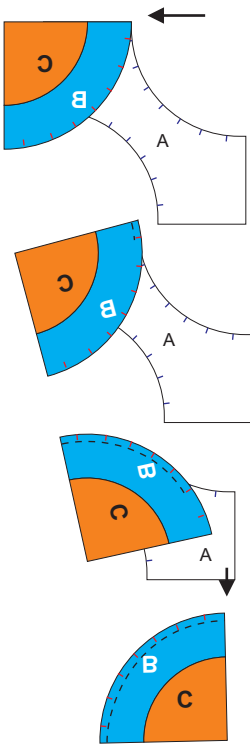
Raise the pressure foot and pull Piece A and B together matching the next slit.
Lower the pressure foot and sew to the next slit.
Continue until you are close to the end.



Raise the pressure foot, tug the edges together as when you started.
Lower the pressure foot and sew to the end.

Don't press the seam until you know your layout. The seam can be pressed to the center (A) or to the outside (B).

Use the same directions above to sew another piece B to the another piece C.



Place Piece A face up.
Place Piece BC face down matching the edges.
Stitch 1/4" from the edge and stop after 3 stitches with the needle down.

Raise the pressure foot and pull Piece A and BC together matching the next slit.
Lower the pressure foot and sew to the next slit.

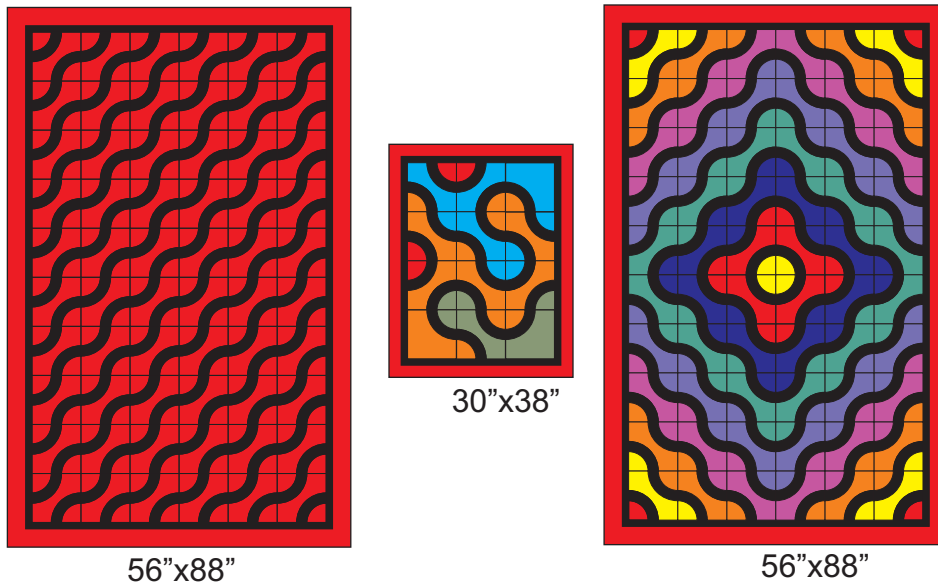
Raise the pressure foot and pull Piece A and BC together matching the next slit.
Lower the pressure foot and sew to the next slit.
Continue until you are close to the end.

Raise the pressure foot, tug the edges together as when you started.
Lower the pressure foot and sew to the end.

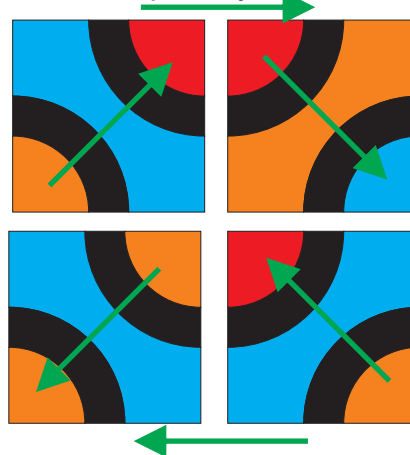
Don't press the seam until you know your layout. The seam can be pressed to the center (A) or to the outside (BC).

Use the same directions above to sew another piece BC to the another piece A.

Have fun laying out your blocks!



Once you have the layout you can now press your seams. You want the curves to be nested.





64" x 72"

What is the Slit 'N Sew™ Method by Quilter's Paradise?

Slits cut into pieces for easy and perfect alignment during piecing - each and every time.

No tedious pinning or paper piecing saving lots of time and effort!
Can be performed by all quilters, from novice to expert!

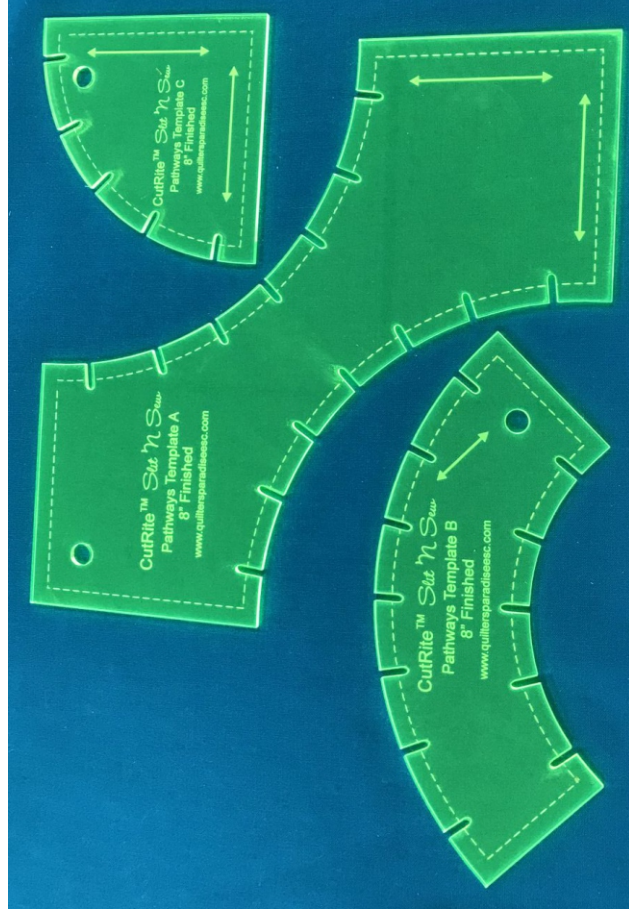
Please visit our web site for more information, videos and other
Slit 'N Sew products.

Making Quilting Simpler
www.quiltersparadiseesc.com

CutRite™ Pathways 8" Finished Template Set

Using the *Slit 'N Sew™* Method

*The Fastest, Easiest Way to Piece
for Quilters of all Skill Levels*



Quilter's Paradise
Making Quilting Simpler

www.quiltersparadiseesc.com

Designed and Written by Quilter's Paradise
© Quilter's Paradise All rights reserved.
Made in USA